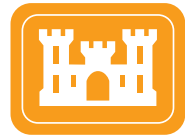
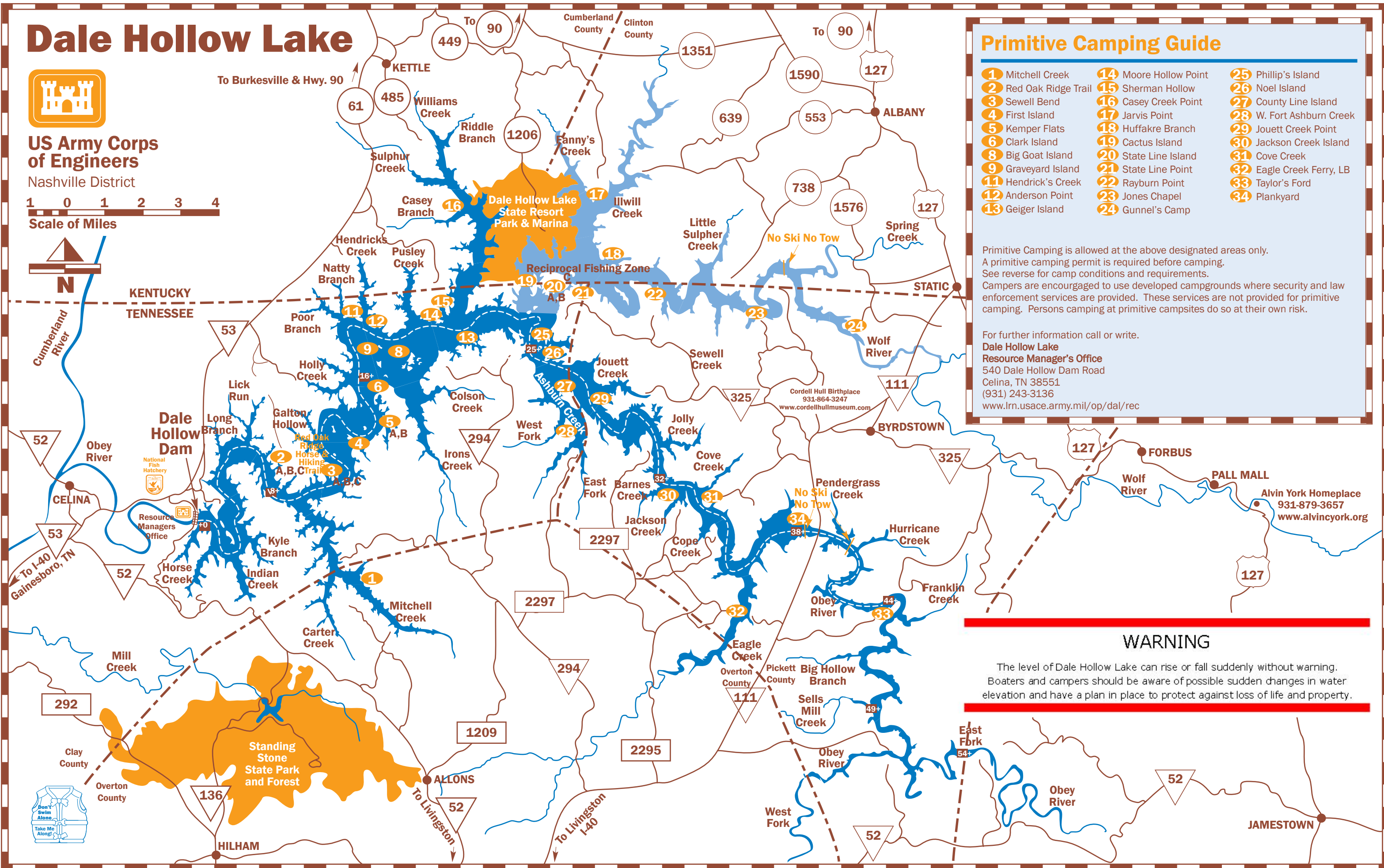


Dale Hollow Lake



US Army Corps of Engineers
Nashville District



Primitive Camping Guide

- | | | |
|-----------------------|-----------------------|--------------------------|
| 1 Mitchell Creek | 14 Moore Hollow Point | 25 Phillip's Island |
| 2 Red Oak Ridge Trail | 15 Sherman Hollow | 26 Noel Island |
| 3 Sewell Bend | 16 Casey Creek Point | 27 County Line Island |
| 4 First Island | 17 Jarvis Point | 28 W. Fort Ashburn Creek |
| 5 Kemper Flats | 18 Huffakre Branch | 29 Jouett Creek Point |
| 6 Clark Island | 19 Cactus Island | 30 Jackson Creek Island |
| 8 Big Goat Island | 20 State Line Island | 31 Cove Creek |
| 9 Graveyard Island | 21 State Line Point | 32 Eagle Creek Ferry, LB |
| 11 Hendrick's Creek | 22 Rayburn Point | 33 Taylor's Ford |
| 12 Anderson Point | 23 Jones Chapel | 34 Plankyard |
| 13 Geiger Island | 24 Gunnell's Camp | |

Primitive Camping is allowed at the above designated areas only. A primitive camping permit is required before camping. See reverse for camp conditions and requirements. Campers are encouraged to use developed campgrounds where security and law enforcement services are provided. These services are not provided for primitive camping. Persons camping at primitive campsites do so at their own risk.

For further information call or write.
Dale Hollow Lake
 Resource Manager's Office
 540 Dale Hollow Dam Road
 Celina, TN 38551
 (931) 243-3136
www.lrn.usace.army.mil/op/dal/rec

WARNING

The level of Dale Hollow Lake can rise or fall suddenly without warning. Boaters and campers should be aware of possible sudden changes in water elevation and have a plan in place to protect against loss of life and property.